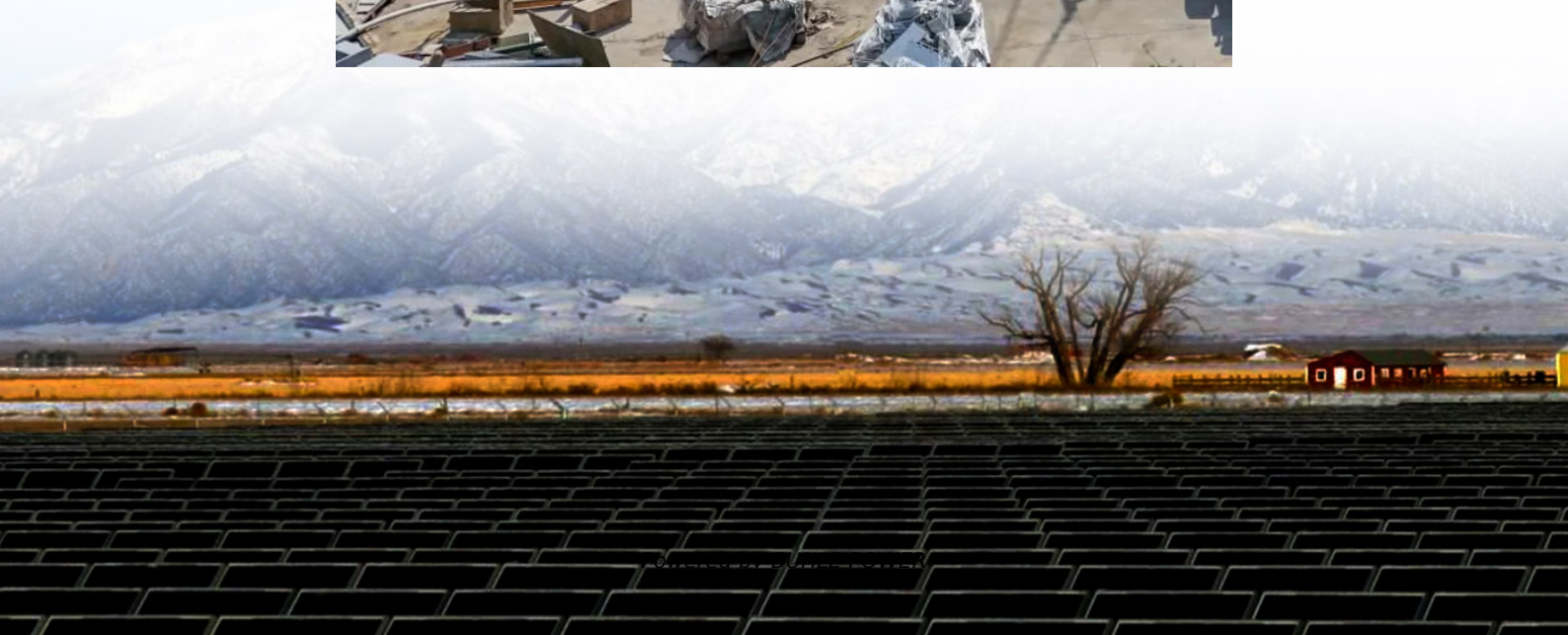


Can the T-level tool battery be charged





Overview

Do cordless tools need a battery?

A reliable power tool battery is essential for anyone using cordless tools, whether for professional work or DIY projects. However, improper charging habits can lead to shorter battery life, weaker performance, or even dangerous situations.

Can a Li-ion battery be stored fully charged?

Good to know about the Makita packs, as that's what I own. Have never bothered to check the fully charged voltage. It's correct that Li-ion batteries don't like to be stored fully charged, but they also don't like to be stored empty. That's even worse. You can get copper going into solution which then results in copper dendritic growth.

How do you charge a NiCd battery?

Here's how to charge them correctly: 1. Charging NiCd and NiMH Batteries Use a charger specifically designed for NiCd or NiMH chemistry. Avoid overcharging; remove the battery once it's fully charged. For NiCd, fully discharge before recharging to reduce memory effect. For NiMH, avoid full discharge to prevent capacity loss.

How do you charge a LiFePO4 battery?

Use a smart charger that stops charging once full. Avoid fast charging frequently, as it can shorten battery life. Keep batteries cool during charging to prevent overheating. 3. Charging LiFePO4 Batteries Use a charger that matches the battery's voltage and current specifications. Avoid overcharging, as it can degrade battery health.



Can the T-level tool battery be charged



[Can the T-level tool battery be charged](#)

Feb 19, 2007 · Battery Hydrometer Readings Chart Fully Charged: In temperate climates, a reading between 1.250 and 1.280 indicates a fully charged battery. In tropical climates, this ...

[Master Power Tool Battery Charging Every Time](#)

Sep 6, 2024 · Power tool batteries are essential for keeping your tools running smoothly, but they don't last forever. Recognizing the signs that your battery needs replacement can save you ...



[Should You Charge Power Tool Batteries Before Storing Them?](#)

Jun 10, 2025 · In many cases, power tool brands offer multiple battery systems that can support varying power requirements. Because they are typically interchangeable, you can move them ...



[Power Tool Battery Charging: Do's, Don'ts](#)

Apr 3, 2025 · Learn how to charge power tool batteries correctly + avoid common mistakes. Discover Ufine Battery's custom power solutions for ...



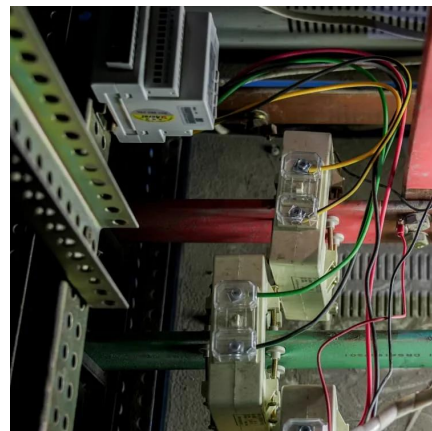
[The Ultimate Guide to Power Tool Battery Care and Longevity](#)

Sep 1, 2023 · The average lifespan of a power tool battery is determined by a few factors. These include how often you use the tool, the type of battery and the conditions you store it in. For ...



[Power Tool Battery Charging: Do's, Don'ts & Pro Tips](#)

Apr 3, 2025 · Learn how to charge power tool batteries correctly + avoid common mistakes. Discover Ufine Battery's custom power solutions for longer-lasting tools.



[The Ultimate Guide to Power Tool Battery ...](#)

Sep 1, 2023 · The average lifespan of a power tool battery is determined by a few factors. These include how often you use the tool, the type of battery ...





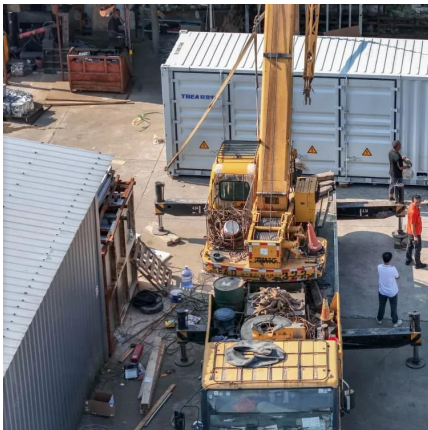
[How Long Do Power Tool Batteries Last and What Affects ...](#)

Jan 17, 2024 · Power tool batteries, particularly lithium-ion types, can last between 2 to 5 years depending on usage and storage conditions. Proper care, including maintaining charge levels ...



[How Long Do Power Tool Batteries Last and ...](#)

Jan 17, 2024 · Power tool batteries, particularly lithium-ion types, can last between 2 to 5 years depending on usage and storage conditions. Proper ...



[Is it bad to keep tool batteries fully charged?](#)

May 24, 2003 · Good to know about the Makita packs, as that's what I own. Have never bothered to check the fully charged voltage. It's correct that Li-ion batteries don't like to be stored fully ...



[Decoding the Power Tool Battery Maze: Interfaces and ...](#)

Feb 19, 2025 · They monitor the battery's temperature and charge level to optimize the charging process. This helps extend battery life and prevent damage. They may also have indicators to ...





How Often Should You Charge Tool Batteries?

Jun 22, 2023 · The battery life of tools varies depending on the type of tool and the battery capacity. Generally, a fully charged battery can last anywhere from 30 minutes to several ...



Understanding Milwaukee Battery Status Indicators

Dec 4, 2024 · Battery status indicators are small visuals on the tool that inform you about the battery's charge level and overall health. With these indicators, you can easily determine how ...

Decoding the Power Tool Battery Maze: ...

Feb 19, 2025 · They monitor the battery's temperature and charge level to optimize the charging process. This helps extend battery life and prevent ...



Contact Us

For technical specifications, project proposals, or partnership inquiries, please visit:
<https://www.bukhobuhle.co.za>



Scan QR Code for More Information



<https://www.bukhobuhle.co.za>