

Can a 48v inverter be used with a 36v voltage





Overview

Can a 48v battery run a 36V motor?

Overheating and Damage: The primary risk of using a 48V battery with a 36V motor is overheating. Motors designed for 36V systems are not equipped to handle the increased voltage, which can lead to excessive heat generation. This overheating can cause permanent damage to the motor's windings and bearings, reducing its lifespan significantly.

Can a 48 volt inverter run a battery?

When you use a 48-Volts inverter, you can use regular and more flexible connectors to connect the inverter to the battery bank. This is so because the thinner the wire, the higher the resistance. And if your DC voltage is lower, you will pass more current through the wires, and they can get very hot, and you lose a lot of battery power.

Do I need a 12V or 48V inverter?

Simply put, if you have a 12V system, you need a 12V inverter; a 48V system requires a 48V inverter. Standard Pure Sine Wave inverters simply change DC power to AC power. Inverter Chargers handle this function plus allow you to charge your batteries off shore power or a generator. Renogy's 3500W Solar Inverter Charger is designed for a 48V system.

Do 48V power inverters work?

48V power inverters work perfectly in 48V solar systems, which are usually either small commercial or large residential. These inverters are typically paired with 48V PV modules and batteries of a comparable voltage.



Can a 48v inverter be used with a 36v voltage



[Can I Put A 48v Battery On 36v Ebike](#)

Dec 16, 2024 · The voltage mismatch between the 48V battery and the 36V system can put undue stress on the battery's internal cells. Over time, this stress could lead to unbalanced ...

[What Happens If You Put 48V to a 36V Motor?](#)

Aug 17, 2024 · In the realm of electric vehicles, including e-bikes and golf carts, understanding the relationship between voltage and motor compatibility is crucial. When you introduce a 48V ...



[48V Motor with 36V Battery: Risks You Should Know](#)

Apr 3, 2025 · FAQs Is it dangerous to use a 48V motor with a 36V battery? The primary safety concerns include increased fire risk from higher current draw, potential controller damage, and ...



[Can A 36V Motor Handle 48V?](#)

Nov 19, 2025 · In this case, the motor is designed to operate at 36V, while the power source outputs 48V. It's important to acknowledge that exceeding the rated voltage of a motor can ...



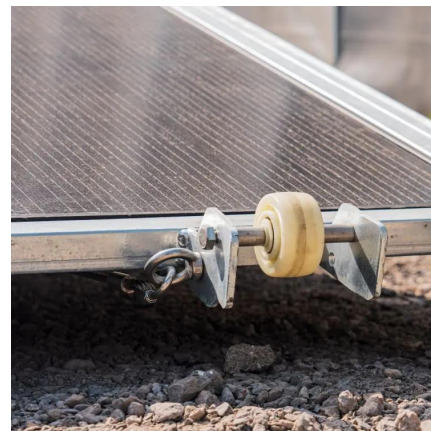
[Can You Use a 48V Battery with a 36V Motor? Expert Guide ...](#)

Jun 5, 2025 · Introduction - Addressing the Core Question Many people ask if a 48V battery can work with a 36V motor. Electric bike enthusiasts, DIY hobbyists, and technical users are drawn ...



[Here's what I've learnt after using 12V, 24V, 36V & 48V inverter ...](#)

Nov 10, 2025 · This was a 48V 3.5kVA Su-Kam Transformer-based Inverter with four 200Ah Su-Kam batteries connected in series and to a Su-Kam BMS. It was a robust system for me and ...



[Can I Put A 48v Battery On 36v Ebike](#)

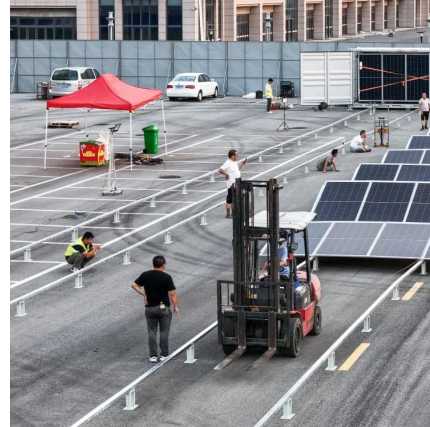
Dec 16, 2024 · The voltage mismatch between the 48V battery and the 36V system can put undue stress on the battery's internal cells. Over time, this ...





[48V Motor with 36V Battery: Risks You Should ...](#)

Apr 3, 2025 · FAQs Is it dangerous to use a 48V motor with a 36V battery? The primary safety concerns include increased fire risk from higher ...



[Can I Replace a 36V Battery with a 48V Battery? An In-Depth ...](#)

Aug 17, 2024 · Understanding Voltage Differences: 36V vs. 48V Batteries Voltage and Performance Voltage is a critical factor in determining the performance of any electrical device. ...

[Can You Use a 48V Battery with a 36V Motor?](#)

Jun 5, 2025 · Introduction - Addressing the Core Question Many people ask if a 48V battery can work with a 36V motor. Electric bike enthusiasts, DIY ...



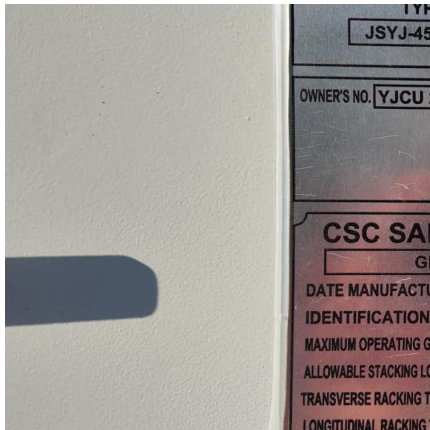
[Can a 48v inverter be connected to a 36v power supply?](#)

Overheating and Damage: The primary risk of using a 48V battery with a 36V motor is overheating. Motors designed for 36V systems are not equipped to handle the increased ...



Can I use a 36V battery with a 48V motor?

Dec 1, 2023 · Powering electric motors requires the right combination of voltage and amperage. When it comes to matching a battery with a motor, it's essential to understand the compatibility ...



Can you run a 48V battery on a 36V motor?

May 5, 2025 · Running a 48V battery on a 36V motor isn't recommended due to voltage incompatibility. A 36V motor is designed for a specific voltage range, and exceeding it risks ...

Contact Us

For technical specifications, project proposals, or partnership inquiries, please visit:
<https://www.bukhobuhle.co.za>

Scan QR Code for More Information



<https://www.bukhobuhle.co.za>