

Can a 24V inverter use 12V





Overview

What is the difference between a 12V and 24V inverter?

The difference between a 12V and 24V inverter is the amount of input volts it can handle. This is the voltage flowing from the battery into the inverter before the electricity is converted from DC to AC. So a 12V inverter is designed for 12 volts input from the battery. And a 24V inverter is designed for 24 volts input from the battery.

Can a 12V inverter run on a 24v battery?

If you try to use a 12V inverter on a 24V battery it will be overloaded. Contrastingly, using a 24V inverter with a 12V battery will lead to a lack of electrical force. Knowing your inverter's voltage and what that means is critical in order for everything to run correctly.

Is a 12V battery better than a 24v battery?

No, one is not better than the other. You should always match your inverter input voltage and battery input voltage otherwise it will not work correctly and risks damage. That means a 12V battery with a 12V inverter and a 24V battery with a 24V inverter.

Should I buy a 24V inverter?

24V Inverters: More efficient in larger systems since they require lower current, reducing energy loss and wire size. This can save energy, extend battery life, and use smaller components. However, the choice isn't always simple. It depends on your system's size, the quality of the inverter, and your power needs.



Can a 24V inverter use 12V



[12V vs 24V Inverter: What's The Difference](#)

Torn between 12V and 24V inverters? Discover the key differences in efficiency, cost, and power capacity to determine which is better for your ...

[will a 12v inverter run off 24v batteries](#)

A significant concern when using a 12V inverter with 24V batteries is the issue of voltage match. A 12V inverter is specifically designed to work with 12V batteries, while 24V batteries have a ...



[12V vs 24V Inverter: What's the difference ...](#)

Knowing the voltage of your inverter critical in order for everything to run correctly. Using the wrong voltage inverter can even lead to irreparable ...



[12V vs 24V Inverter: What's the difference between 12 and ...](#)

Knowing the voltage of your inverter critical in order for everything to run correctly. Using the wrong voltage inverter can even lead to irreparable damage to your equipment. That's why ...



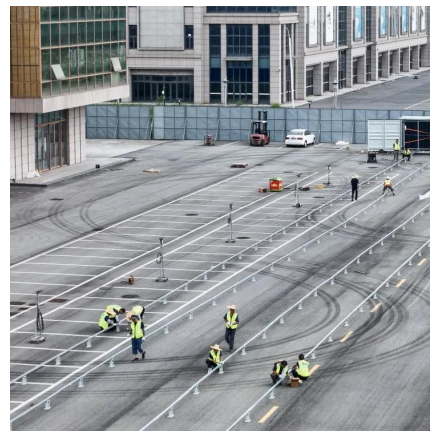
[12V vs 24V Inverter: What's The Difference & Which is Better](#)

Torn between 12V and 24V inverters? Discover the key differences in efficiency, cost, and power capacity to determine which is better for your energy needs.



[Can I Run A 12V Inverter On A 24V Battery? Solutions And...](#)

Feb 6, 2025 · To use a 12V inverter with a 24V battery, a DC-DC buck converter can be employed. This device reduces the 24V input down to 12V for the inverter, ensuring safe and ...



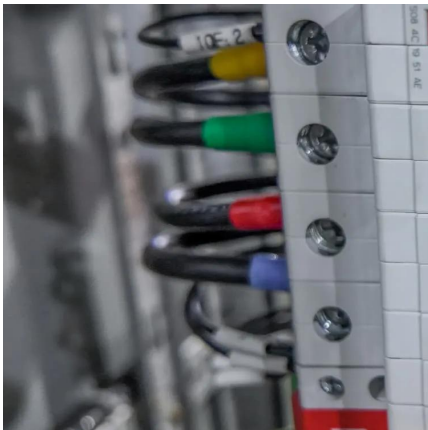
[how to use 12V inverter on 24 volt \(2 battery\) system](#)

Jan 24, 2024 · I have a 12V to 120V Inverter (1800 Watts). So have to go with 24V for 2 PVs to get more power (1300W max I think) - What is the best way to connect it? Straight to a 12 volt ...



[Can I Run a 12V Inverter on a 24V Battery?](#)

Apr 10, 2025 · Application Scenario: Provide power support in a small store or temporary work site. System Options: Inverter: Use a high power 12V ...



[Can You Use a 24 volt inverte With a 12V Battery System?](#)

Jul 19, 2025 · 24 Volt Inverter on 12V Battery: Risky Mismatch Trying to power a 24 volt inverter with half the voltage is like feeding a sports car watered-down fuel--performance collapses ...

[Can I Run a 12V Inverter on a 24V Battery?](#)

Apr 10, 2025 · Application Scenario: Provide power support in a small store or temporary work site. System Options: Inverter: Use a high power 12V inverter with 2000W and above to ...



[Can I Use 24V Inverter with 12V Battery](#)

May 1, 2025 · Wondering if a 24V inverter can be used with a 12V battery? Learn the truth and explore key considerations before making your decision.



[12V Inverter vs 24V Inverter -- What Is The Difference](#)

Dec 11, 2024 · This article will explore the differences between 12v inverter vs 24v inverter, considering factors such as energy loss, battery requirements, and suitability for different ...



[Can I Use a 24V Inverter with a 12V Battery? Compatibility ...](#)

Feb 7, 2025 · To use a 24V inverter with a 12V battery, you can connect two 12V batteries in series. Connecting batteries in series effectively doubles the voltage, providing 24 volts to the ...

Contact Us

For technical specifications, project proposals, or partnership inquiries, please visit:
<https://www.bukhobuhle.co.za>

Scan QR Code for More Information



<https://www.bukhobuhle.co.za>