

Can 4 strings of lithium iron phosphate use a 12v inverter





Overview

How do I choose a lithium battery for inverter use?

When selecting a lithium battery for inverter use, it is essential to understand the key specifications: Voltage (V): Most inverter systems use 12V, 24V, or 48V batteries. Higher voltage systems are more efficient for larger power loads. Capacity (Ah or Wh): Amp-hours or Watt-hours indicate how much energy the battery can store and deliver.

Which lithium ion battery is used in a stationary inverter?

There are multiple types of lithium-ion batteries, but the two most commonly used in inverters are: 1. Lithium Iron Phosphate (LiFePO₄) 2. Lithium Nickel Manganese Cobalt Oxide (NMC) LiFePO₄ is preferred for stationary inverter setups due to its superior safety and reliability. Part 4. Key technical specifications you must know.

Are lithium batteries good for inverters?

Lithium batteries offer much higher energy density, longer life cycles, reduced weight, and faster charging times than traditional lead-acid batteries. This makes them ideal for both small and large-scale inverter applications. Part 2. How does a lithium battery power an inverter system?

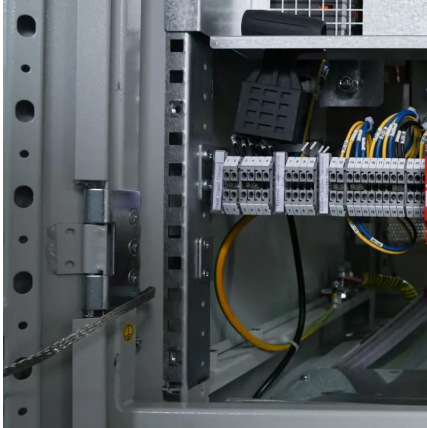
Here's how the process works:.

How does a lithium battery work with an inverter?

It works with inverters by delivering direct current (DC), which the inverter transforms into alternating current (AC) to power home appliances, RV electronics, or off-grid systems. Lithium batteries offer much higher energy density, longer life cycles, reduced weight, and faster charging times than traditional lead-acid batteries.



Can 4 strings of lithium iron phosphate use a 12v inverter



[How many cells in a 12v lifepo4 battery](#)

Jul 2, 2024 · How many cells in a 12v lifepo4 battery Understanding Battery Configuration LiFePO₄ (lithium iron phosphate) batteries are a popular choice for various applications. They are ...

[Lithium Battery for Inverter: Pros, Specs, and Tips](#)

Jun 24, 2025 · Lithium batteries offer top performance and long life for inverters. This guide covers all you need to know for your power storage needs.



[Everything You Need to Know About LiFePO₄ Battery Cells: A](#)

6 days ago · Complete Guide to LiFePO₄ Battery Cells: Advantages, Applications, and Maintenance Introduction to LiFePO₄ Batteries: The Energy Storage Revolution Lithium Iron ...



[Lithium Series, Parallel and Series and Parallel Connections](#)

Mar 23, 2021 · How to connect lithium batteries in parallel 3.1 Lithium batteries are connected in parallel to 3.2 Parallel Example 1: 12V nominal lithium iron phosphate batteries connected in ...



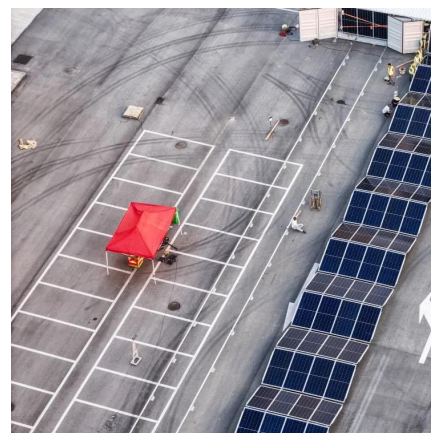
[The LiFePO4 \(LFP\) Battery: An Essential Guide](#)

May 31, 2022 · LiFePO4 is short for Lithium Iron Phosphate. A lithium-ion battery is a direct current battery. A 12-volt battery for example is typically ...



[Can I Connect Inverter to Lithium Battery?](#)

Oct 31, 2024 · Yes, you can connect an inverter to a lithium battery. Lithium batteries, particularly Lithium Iron Phosphate (LiFePO4) batteries, are well-suited for use with inverters due to their ...



[Can I Use LiFePO4 Battery for Inverter?](#)

Oct 31, 2024 · Yes, you can use a LiFePO4 battery (Lithium Iron Phosphate) for an inverter, provided that the inverter is compatible with the battery's specifications. LiFePO4 batteries are ...



[4 strings of lithium iron battery photovoltaic panels](#)

In this paper the use of lithium iron phosphate (LiFePO₄) batteries for stand-alone photovoltaic (PV) applications is discussed. The advantages of these batteries are that they are ...



[Lithium Battery for Inverter: Pros, Specs, and ...](#)

Jun 24, 2025 · Lithium batteries offer top performance and long life for inverters. This guide covers all you need to know for your power storage ...

[Lithium Iron Phosphate Battery Solar: Complete 2025 Guide](#)

3 days ago · Lithium iron phosphate batteries use lithium iron phosphate (LiFePO₄) as the cathode material, combined with a graphite carbon electrode as the anode. This specific ...



[Do Lithium Batteries Need a Special Inverter?](#)

Nov 28, 2023 · Lithium batteries, including lithium-ion batteries and lithium iron phosphate (LiFePO₄) batteries, don't necessarily require a special ...



[The LiFePO4 \(LFP\) Battery: An Essential Guide](#)

May 31, 2022 · LiFePO4 is short for Lithium Iron Phosphate. A lithium-ion battery is a direct current battery. A 12-volt battery for example is typically composed of four prismatic battery ...



[How many cells in a 12v lifepo4 battery](#)

Jul 2, 2024 · How many cells in a 12v lifepo4 battery Understanding Battery Configuration LiFePO4 (lithium iron phosphate) batteries are a popular ...

[Do Lithium Batteries Need a Special Inverter?](#)

Nov 28, 2023 · Lithium batteries, including lithium-ion batteries and lithium iron phosphate (LiFePO4) batteries, don't necessarily require a special inverter specifically designed for ...



Contact Us

For technical specifications, project proposals, or partnership inquiries, please visit:
<https://www.bukhobuhle.co.za>



Scan QR Code for More Information



<https://www.bukhobuhle.co.za>