

Battery Management BMS Module





Overview

What is a battery management system (BMS)?

It monitors and controls vital functions that optimize performance and safety. A BMS offers more than simple protection circuit modules (PCMs). It provides complete management capabilities that help batteries last longer and prevent dangerous failures. A battery management system is an electronic system that takes care of rechargeable batteries.

What does a battery management system do?

It also detects isolation faults and controls the contactors and the thermal management system. The battery management system protects the operator of the battery-powered system and the battery pack itself against overcharge, over-discharge, overcurrent, cell short circuits, and extreme temperatures. introduction to battery management systems.

What functionalities can be found in a battery management system (BMU)?

Some other functionalities that can be in the BMU are interlock functionality or the real time clock and vector management system for the software. BMS Software Architecture: The battery management system architecture has different layers that abstract different parts of hardware.

What is a BMS master controller?

Data is sent to a BMS Master Controller, which aggregates and analyzes the information. Battery Management Unit (BMU): The Battery Management Unit (BMU) is a key component in a Battery Management System (BMS) responsible for monitoring and measuring critical parameters of the entire battery pack or its individual cells.



Battery Management BMS Module



[Battery management systems \(BMS\) . Infineon Technologies](#)

Discover our advanced BMS solutions, designed to enhance performance, extend battery life, and provide reliable energy management.

[Industrial Battery Management System \(BMS\) devices](#)

Oct 13, 2023 · STSW-L9961BMS Firmware package, containing source code and binaries, with standalone firmware driver and application examples (*) * battery voltage, current and ...



[What is a Battery Management System \(BMS\)? Essential ...](#)

May 5, 2025 · A Battery Management System (BMS) safeguards lithium-ion batteries by monitoring voltage, current, and temperature, preventing overcharge, discharge, and thermal ...

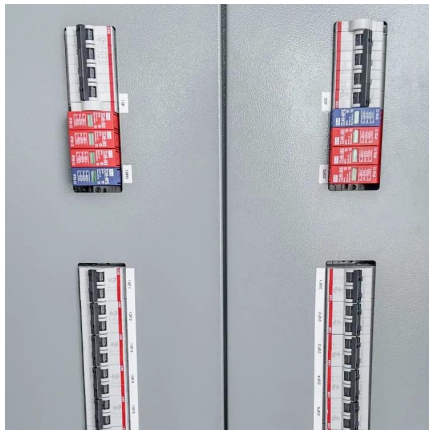
[Battery Management System: Components, ...](#)

Oct 7, 2024 · Learn the basics of Battery Management Systems (BMS), improving battery performance, safety, and longevity in EVs, renewable ...



[Battery Management System \(BMS\) Detailed Explanation: ...](#)

May 7, 2025 · Battery Management System (BMS) is the "intelligent manager" of modern battery packs, widely used in fields such as electric vehicles, energy storage stations, and consumer ...



[What Is a Battery Management System \(BMS\)?](#)

2 days ago · A battery management system (BMS) is a sophisticated electronic and software control system that is designed to monitor and manage the operational variables of ...



[What Is a Battery Management System ...](#)

Aug 7, 2025 · A Battery Management System (BMS) is an essential component in modern battery-powered applications, responsible for ...





[Difference Between Centralized and Modular ...](#)

Jan 2, 2025 · A Battery Management System (BMS) is an electronic system that manages and monitors the charging and discharging of rechargeable ...



[Battery Management System](#)

4 days ago · The Battery Management System (BMS) is the hardware and software control unit of the battery pack. This is a critical component that measures cell voltages, temperatures, and ...



[Technical Deep Dive into Battery ...](#)

Sep 1, 2025 · A Battery Management System (BMS) is an electronic system designed to monitor, manage, and protect a rechargeable battery (or ...



[Battery management system and battery disconnect unit](#)

The battery management system and electronical battery disconnect unit consist of several components designed to monitor, manage, control, and disconnect the battery cells of a ...





[A Deep Dive into Battery Management ...](#)

Aug 24, 2023 · Modular battery management system architecture involves dividing BMS functions into separate modules or sub-systems, each ...

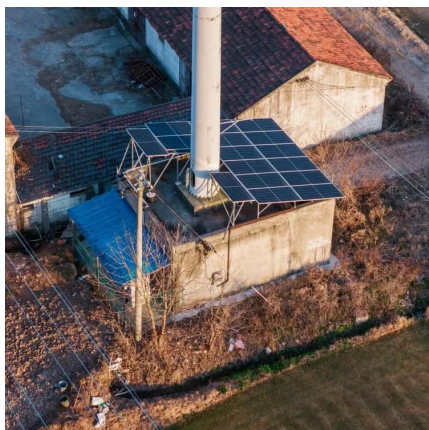


[What is a Battery Management System \(BMS\)? - How it ...](#)

2 days ago · Battery management system (BMS) is technology dedicated to the oversight of a battery pack, which is an assembly of battery cells, electrically organized in a row x column ...

[What is a Battery Management System ...](#)

2 days ago · Battery management system (BMS) is technology dedicated to the oversight of a battery pack, which is an assembly of battery cells, ...



[Technical Deep Dive into Battery Management System BMS](#)

Sep 1, 2025 · A Battery Management System (BMS) is an electronic system designed to monitor, manage, and protect a rechargeable battery (or battery pack). It plays a crucial role in ensuring ...



[What Is a Battery Management System ...](#)

2 days ago · A battery management system (BMS) is a sophisticated electronic and software control system that is designed to monitor and ...



[What Is a Battery Management System \(BMS\)?](#)

Aug 7, 2025 · A Battery Management System (BMS) is an essential component in modern battery-powered applications, responsible for monitoring, protecting, and optimizing the ...

[Battery Management System](#)

4 days ago · The Battery Management System (BMS) is the hardware and software control unit of the battery pack. This is a critical component that ...



[Introduction to Battery Management Systems ...](#)

Feb 8, 2021 · Learn the high-level basics of what role battery management systems (BMSs) play in power design and what components are ...



[Battery Management System \(BMS\) Detailed ...](#)

May 7, 2025 · Battery Management System (BMS) is the "intelligent manager" of modern battery packs, widely used in fields such as electric ...



Contact Us

For technical specifications, project proposals, or partnership inquiries, please visit:
<https://www.bukhobuhle.co.za>

Scan QR Code for More Information



<https://www.bukhobuhle.co.za>