

Base station to mobile station communication





Overview

What is a base station in a telecommunications network?

A base station is a critical component in a telecommunications network. A fixed transceiver that acts as the central communication hub for one or more wireless mobile client devices. In the context of cellular networks, it facilitates wireless communication between mobile devices and the core network.

What is a mobile base station?

A mobile base station, also called a base transceiver station (BTS), is a fixed radio transceiver in any mobile communication network or wide area network (WAN). The base station connects mobile devices to the network and routes them to other terminals in the network or to the core network of a mobile operator. [Read more Explore Mobile base.](#)

Why are base stations important in cellular communication?

Base stations are important in the cellular communication as it facilitate seamless communication between mobile devices and the network communication. The demand for efficient data transmission are increased as we are advancing towards new technologies such as 5G and other data intensive applications.

Why are base stations important?

Base stations are the backbone of modern telecommunications networks, providing the essential infrastructure for wireless communication. They enable mobile devices to connect to the network, manage traffic efficiently, and ensure robust and reliable connectivity across wide areas.



Base station to mobile station communication



[What is a Base Station?](#)

Jan 18, 2022 · A base station works as the main communication point for one or more wireless mobile devices. It is a fixed transceiver capable of ...

[What is a Base Station in Telecommunications?](#)

What is a Base Station? A base station is a critical component in a telecommunications network. A fixed transceiver that acts as the central communication hub for one or more wireless mobile ...



[Complete Guide to 5G Base Station ...](#)

Nov 17, 2024 · At the heart of mobile communication networks lies the main base station equipment. Central to this setup are three critical ...



[What Is A Base Station?](#)

Apr 22, 2024 · A base station is an integral component of wireless communication networks, serving as a central point that manages the transmission and reception of signals between ...



[BTS \(base station transceiver\)](#)

Mar 6, 2023 · BTS, or Base Station Transceiver, is a critical component in modern mobile communication networks. BTS is responsible for ...



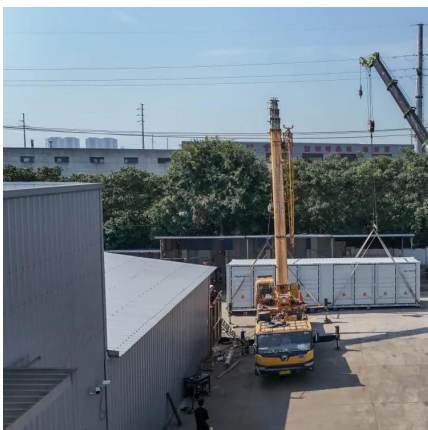
[An Independent UAV-Based Mobile Base Station](#)

Feb 22, 2025 · In disaster scenarios, e.g., earthquakes, tsunamis, and wildfires, communication infrastructure often becomes severely damaged. To rapidly restore damaged communication ...



[An Independent UAV-Based Mobile Base ...](#)

Feb 22, 2025 · In disaster scenarios, e.g., earthquakes, tsunamis, and wildfires, communication infrastructure often becomes severely damaged. ...





EMF

Some base stations have radio communications dishes (shaped like a drum) that connect the base station to the rest of the base station network. top What are 2G and 3G networks? 3G, or ...



What is a Base Station?

Apr 1, 2023 · The electromagnetic waves emitted by base stations and mobile phones are like air, filling us all around. Everyone knows mobile ...

What Is the Role of a Base Station in Wireless Communication?

Jun 27, 2025 · Base stations are the backbone of wireless communication networks, playing a pivotal role in signal transmission, network reliability, and high-speed data connectivity. As ...



Timing & Synchronization technology ...

About mobile Base Station GPS As mobile phones advanced from a 1st generation analog system in the 1980's to a 2nd generation digital system ...



Understanding Base Stations: The Backbone of Wireless Communication

Jan 6, 2025 · Conclusion Base stations are the backbone of modern wireless communication networks. They ensure that mobile devices can connect to the internet, make calls, and send ...



Understanding Base Stations in Mobile Communication

Nov 21, 2025 · A base station is a fixed point that enables wireless communication between mobile devices and the network. These stations consist of radio transceivers, antennas, and a ...

base station

"Mobile Cellular Communications: Principles and Applications" by Theodore S. Rappaport: A comprehensive text covering cellular communication systems, including detailed information ...



What Is the Role of a Base Station in Wireless Communication?

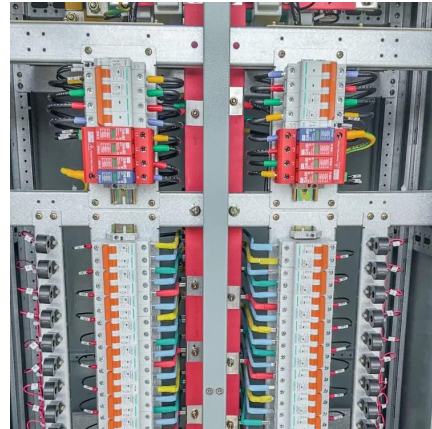
Jun 27, 2025 · Base stations are critical components in wireless communication networks, serving as the intermediary between mobile devices and the core network. They play a vital role in ...





Base Stations and Cell Towers: The Pillars of Mobile ...

May 16, 2024 · Base stations use antennas mounted on cell towers to send and receive radio signals to and from mobile devices within their coverage area. This communication enables ...



Base Stations

Jul 23, 2025 · The present-day tele-space is incomplete without the base stations as these constitute an important part of the modern-day scheme of wireless communications. They are ...

gsm base station

Nov 30, 2023 · A GSM (Global System for Mobile Communications) base station, also known as a BTS (Base Transceiver Station), is a critical component in a GSM cellular network. It provides ...



What Is a Telecom Base Station and How Does It Work?

A base station (BS)--short for Base Transceiver Station--is a core component of a mobile communication network. It serves as the interface between mobile devices and the operator's ...



Contact Us

For technical specifications, project proposals, or partnership inquiries, please visit:
<https://www.bukhobuhle.co.za>

Scan QR Code for More Information



<https://www.bukhobuhle.co.za>