

5g base station power access





Overview

Is 5G base station power consumption accurate?

esan@huawei.comAbstract—The energy consumption of the fifth generation (5G) of mobile networks is one of the major concerns of the telecom industry. However, there is not currently an accurate and tractable approach to evaluate 5G base stations (BSs) power consumption. In this article, we pr.

How can we improve the energy efficiency of 5G networks?

To improve the energy efficiency of 5G networks, it is imperative to develop sophisticated models that accurately reflect the influence of base station (BS) attributes and operational conditions on energy usage.

Should power consumption models be used in 5G networks?

This restricts the potential use of the power models, as their validity and accuracy remain unclear. Future work includes the further development of the power consumption models to form a unified evaluation framework that enables the quantification and optimization of energy consumption and energy efficiency of 5G networks.

Do base stations dominate the energy consumption of the radio access network?

Furthermore, the base stations dominate the energy consumption of the radio access network. Therefore, it is reasonable to focus on the power consumption of the base stations first, while other aspects such as virtualization of compute in the 5G core or the energy consumption of user equipment should be considered at a later stage.



5g base station power access



[Multi-objective optimization model of micro ...](#)

Nov 14, 2022 · By encouraging 5G base station to participate in demand response and incorporating it into the Microgrid, it can reduce the power ...



[Energy-efficiency schemes for base stations in 5G ...](#)

In today's 5G era, the energy efficiency (EE) of cellular base stations is crucial for sustainable communication. Recognizing this, Mobile Network Operators are actively prioritizing EE for ...

[Macrocell vs. Small Cell vs. Femtocell: A 5G ...](#)

Oct 20, 2023 · 5G networks also use macrocells, such as cell towers, for connectivity. These larger base stations enable lower 5G frequencies, ...



[Comparison of Power Consumption Models for 5G Cellular Network Base](#)

Jul 1, 2024 · Additional discussion of power models for radio access network, user equipment, and the system level as well as further remarks on base station power models can be found in ...



[Modelling the 5G Energy Consumption using Real-world ...](#)

Sep 15, 2025 · To address this, we propose a novel deep learning model for 5G base station energy consumption estimation based on a real-world dataset. Unlike existing methods, our ...



[5G Base Station - WiSig Networks](#)

We are developing a trusted, secure, disaggregated and standard compliant 5G Bharat RAN solution for Indian market that inter-operates with 5G Core and third-party low-power and high ...



[What is 5G base station architecture?](#)

Dec 1, 2021 · What are your power requirements? 5G base stations typically need more than twice the amount of power of a 4G base station. In 5G ...





Energy consumption optimization of 5G base stations ...

Aug 1, 2023 · The explosive growth of mobile data traffic has resulted in a significant increase in the energy consumption of 5G base stations (BSs). However, the e...

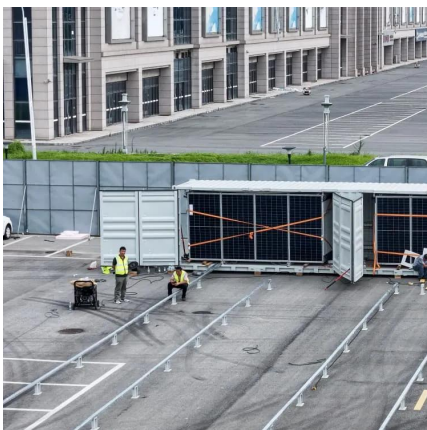


Power consumption based on 5G communication

Oct 17, 2021 · At present, 5G mobile traffic base stations in energy consumption accounted for 60% ~ 80%, compared with 4G energy consumption increased three times. In the future, high ...

Evaluation of the power-saving effect of 5G base station...

May 29, 2025 · Abstract The research and application of energy-saving technology for 5G wireless networks are significant for the emission-reduction work of Communication Operators. ...



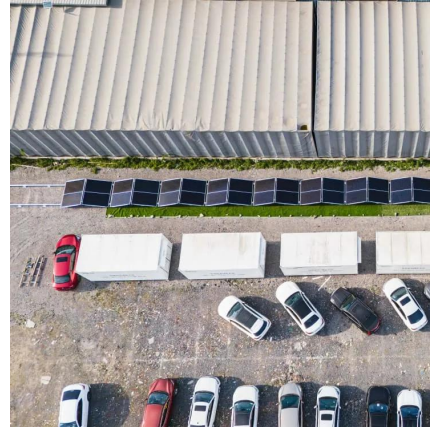
5G RAN Architecture: Nodes And Components

Jan 24, 2023 · 4. Base Station Base Station (BS) is a key component of the 5G Radio Access Network (RAN) architecture that serves as an access point for wireless connections between ...



[Optimal energy-saving operation strategy of 5G base station ...](#)

Dec 1, 2025 · To further explore the energy-saving potential of 5 G base stations, this paper proposes an energy-saving operation model for 5 G base stations that incorporates ...

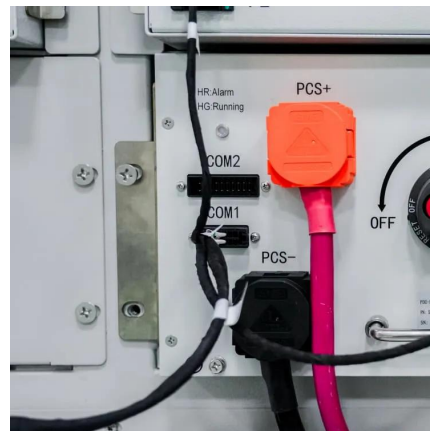


[Key Technologies and Solutions for 5G Base Station Power ...](#)

Why Power Management Is the Achilles' Heel of 5G Deployment? As 5G networks proliferate globally, a critical question emerges: How can we sustainably power 5G base stations that ...

5G System Overview

Aug 8, 2022 · The NR base stations (logical node "gNB") connect with each other via the Xn interface, and the Access Network (called the "NG-RAN ...



[What Is a Base Station? Exploring the Core of 5G Networks ...](#)

Aug 19, 2025 · Base stations are the core of mobile communication, and with the rise of 5G, thermal and energy challenges are increasing. This article explains the definition, structure, ...



[Machine Learning and Analytical Power Consumption ...](#)

Jan 23, 2023 · Abstract--The energy consumption of the fifth generation (5G) of mobile networks is one of the major concerns of the telecom industry. However, there is not currently an ...



[5G network deployment and the associated energy ...](#)

Jul 1, 2022 · The simulation results show that 700 MHz and 26 GHz will play an important role in 5G deployment in the UK, which allow base stations to meet short-term and long-term data ...

[Electric load characteristics analysis of 5G base stations in ...](#)

Nov 14, 2022 · 5G base station (BS) is a fundamental part of 5th generation (5G) mobile networks. To meet the high requirements of the future mobile communication, 5G BS has ...



[Optimal configuration of 5G base station energy storage ...](#)

Feb 1, 2022 · A multi-base station cooperative system composed of 5G acer stations was considered as the research object, and the outer goal was to maximize the net profit over the ...



End-to-End Power Models for 5G Radio Access Network

Jan 30, 2025 · Additionally, calculations reveal that base stations account for 74% to 78% of the total power consumption in 5G networks. These insights helped pioneer the calculation of the ...



Contact Us

For technical specifications, project proposals, or partnership inquiries, please visit:
<https://www.bukhobuhle.co.za>

Scan QR Code for More Information



<https://www.bukhobuhle.co.za>