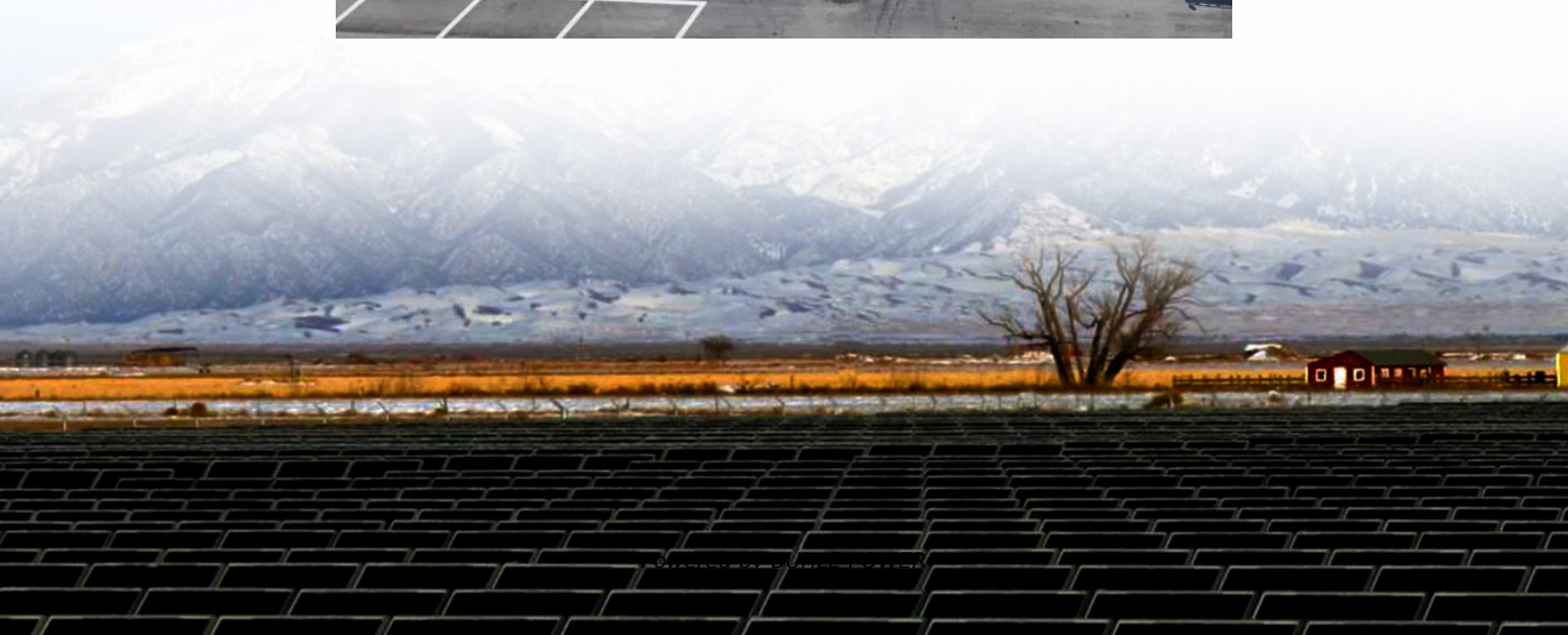
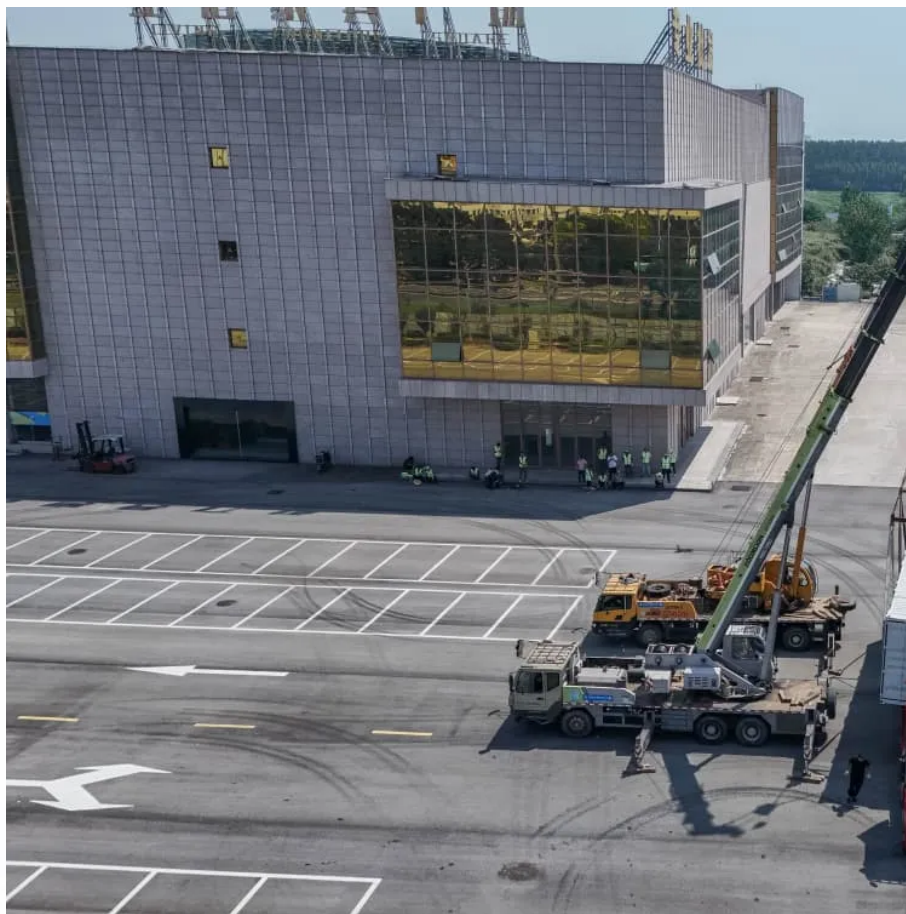


48v inverter connected to 36v





Overview

Can a 48v battery run a 36V motor?

Overheating and Damage: The primary risk of using a 48V battery with a 36V motor is overheating. Motors designed for 36V systems are not equipped to handle the increased voltage, which can lead to excessive heat generation. This overheating can cause permanent damage to the motor's windings and bearings, reducing its lifespan significantly.

Can a 48 volt inverter run a battery?

When you use a 48-Volts inverter, you can use regular and more flexible connectors to connect the inverter to the battery bank. This is so because the thinner the wire, the higher the resistance. And if your DC voltage is lower, you will pass more current through the wires, and they can get very hot, and you lose a lot of battery power.

What is a 48 volt inverter?

In other words, it is a device that can take current from a bank of batteries (48V) and convert it to the type supplied in the grid to power your appliances and devices. I suggest you use A 24-volt inverter or 36-volt inverter or 48-volt inverter when you need to power appliances over 3000 Watts.

Should I upgrade a 48v battery to a 36V battery?

Plan before you upgrade. If you consider putting a 48V battery in a system made for 36V, it is essential to check all parts—including the motor, wiring, controller, and safety features—to ensure that the upgrade is safe and effective. A checklist helps.



48v inverter connected to 36v



[Is it possible to run 36v motor on 48v battery?](#)

Jun 11, 2015 · Hey Guys, Regarding my previous thread, I've found a suitable narrow motor with disc brake mount and nice customer service, but the motor is 36v, and my battery is little ...

[Can a 48v inverter be connected to a 36v power supply?](#)

Overheating and Damage: The primary risk of using a 48V battery with a 36V motor is overheating. Motors designed for 36V systems are not equipped to handle the increased ...



[Can you run a 48V battery on a 36V motor?](#)

May 5, 2025 · Running a 48V battery on a 36V motor isn't recommended due to voltage incompatibility. A 36V motor is designed for a specific voltage range, and exceeding it risks ...



[48/800 Inverter VE.Direct on 36 V system](#)

May 3, 2025 · Good afternoon gents, I've got a 48/800 inverter on the way for an off-grid solar system up in northern Canada. The system will be a 4S 12V setup with a battery balancer, so ...



[Here's what I've learnt after using 12V, 24V, 36V & 48V inverter...](#)

Nov 10, 2025 · My Second Inverter Setup: 48V
This was a 48V 3.5kVA Su-Kam Transformer-based Inverter with four 200Ah Su-Kam batteries connected in series and to a Su-Kam BMS. It ...



[Can I convert a 36 volt battery to a 48 volt battery or how do ...](#)

Mar 24, 2023 · The only way to convert a 48 V 10 AH battery to a 48 V 20 AH battery is to connect 2 in parallel. You can use a boost converter to increase the voltage of a 36 V battery to 48 V.



[Can You Use a 48V Battery with a 36V Motor?](#)

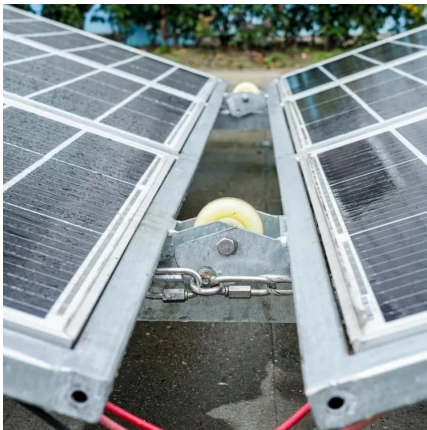
Jun 5, 2025 · When you connect a 48V battery to a 36V motor, the motor may run outside its ideal range, leading to inefficiencies and risks like ...





What Happens If You Put 48V to a 36V Motor?

Aug 17, 2024 · In the realm of electric vehicles, including e-bikes and golf carts, understanding the relationship between voltage and motor compatibility is crucial. When you introduce a 48V ...



48V Motor with 36V Battery: Risks You Should Know

Apr 3, 2025 · Using a 36V battery with a 48V motor reduces performance by 25%, increases heat generation, shortens component lifespan, and creates potential fire hazards due to higher ...

48v battery through a 36v controller..?

Jun 27, 2020 · It should be OK. Some controllers auto-detect voltage, in which case you must make sure that the battery voltage is unambiguous when you connect it because the controller ...



48V Motor with 36V Battery: Risks You Should ...

Apr 3, 2025 · Using a 36V battery with a 48V motor reduces performance by 25%, increases heat generation, shortens component lifespan, and ...



[Can You Use a 48V Battery with a 36V Motor? Expert Guide ...](#)

Jun 5, 2025 · When you connect a 48V battery to a 36V motor, the motor may run outside its ideal range, leading to inefficiencies and risks like extra heat and lower power output. Problems can ...



Contact Us

For technical specifications, project proposals, or partnership inquiries, please visit:
<https://www.bukhobuhle.co.za>

Scan QR Code for More Information



<https://www.bukhobuhle.co.za>